

PLANNING FOR YOUR FUNERAL

EXPLANATION OF SERVICES AND PRICE LIST



Northview Funeral Chapel & Cremation Centre

1490 Highbury Avenue North, London, Ontario N5Y 5N6

519-457-1397 Fax: 519-659-3207

northview@rogers.com www.northviewfuneralchapel.com

BAO License #1473

This price list was created on December 1, 2021 and remains in effect.

Persons in charge of day to day operations:

Paul R. Needham - Owner & Operator - License #200642

Frank Schimanski - Establishment Manager - License # 202265

Explanation of Services

Professional & Staff Services:

Professional consultation with licensed personnel, including, but not limited to, expert advice on options to meet your needs. Coordination of all activities, rites and ceremonies, before, during and after they have been provided, including services and supplies provided by us, as well as those provided by third party suppliers, such as flowers and death notices.

Documentation:

Completion and filing of all documents necessary to carry out the services and supplies requested, including, but not limited to: death registration, burial permit, coroner's certificate for cremation, documentation necessary to ship the body out of the country. Provision of unlimited Proofs of Death issued by Northview Funeral Chapel (our proofs of death are usually accepted for most estate settlement purposes, but sometimes a provincial "Death Certificate" will be necessary and is available from the Office of the Registrar General).

Transport Remains:

Transportation of the remains from one place to another, for example the hospital to the business, or the business to the cemetery or crematorium, a charge applies for each transportation request: Using an unmarked van or using a funeral coach or hearse. Additional fees will apply beyond 25 kilometers - see Vehicles.

Facilities for Preparation/Embalming/Shelter:

Facilities used to prepare, embalm and shelter the body.

Basic Preparation of Remains (requires Facilities for Preparation/Embalming/Shelter):

The preparation of the body for placement into the casket, may include bathing, dressing and the setting of facial features for identification or viewing without embalming.

Embalming of Remains (requires Basic Preparation of Remains):

Embalming is the restoration, disinfection and temporary preservation of a deceased person's body in order to be suitable for display in an open casket. Embalming is not legally required, but may be recommended to preserve the body between the time of death and the visitation or disposition of the deceased.

Partial/Basic Embalming (requires Facilities for Preparation/Embalming/Shelter):

Involves the use of embalming chemicals to treat the abdominal and thoracic cavities to delay the advance of decomposition. Does not address appearance issues and is done to ensure remains may be



1490 Highbury Avenue North
London, ON N5Y 5N6
519-457-1397 or northview@rogers.com

present for visiting/funeral service in a closed casket. Viewing is not permitted when partial embalming is authorized. Full arterial embalming is strongly recommended if remains are to be present for more than 72 hours before burial or cremation takes place.

Holding Fee:

Retention of a body exceeding 5 days at our facilities. Cost is charged at a daily rate of \$40.00.

Cremated Remains Refundable Deposit:

The funeral home may charge a \$350 refundable deposit until cremated remains are retrieved from the funeral home. Should the cremated remains not be picked up within one year, the funeral home may inter the cremated remains in a cemetery and retain the deposit referred to in this section.

Staff Services for Visitation:

Staff to coordinate and oversee the visitation (informal gathering) for the period specified in the contract. As per the BAO COVID-19 protocol guidelines, fluctuations will occur with the number of required staff per visitation and staff attendance costs.

Facilities for Visitation (requires Staff Services for Visitation):

Designated facilities used for visitation for the period specified in the contract. Staff will prepare the facilities as per the instructions from the family. Sanitization and cleaning between visitations are included.

Staff Services for Ceremony:

Staff to coordinate and oversee the ceremony or memorial service. As per the BAO COVID-19 protocol guidelines, fluctuations will occur with the number of required staff for the ceremony and staff attendance costs.

Facilities for Ceremony (requires Staff Service for Ceremony):

Designated facilities used for the ceremony or memorial service. Staff will prepare the facilities as per the instructions from the family. Sanitization and cleaning between visitations are included.

Funeral Vehicles:

- **Lead/Clergy Car** - used to lead the funeral procession and/or transport the clergy to/from church, funeral home, cemetery
- **Funeral Coach** - used to transport deceased to cemetery
- **Service Vehicle** - used to transport deceased from place of death to the funeral home, from the funeral home to crematorium or cemetery.

Additional mileage (requires Funeral Vehicles):

A mileage charge will apply for transfers over 25 km at a rate of \$1.95 per km for the Service Vehicle and \$2.00 for the Funeral Coach or Lead Car.



1490 Highbury Avenue North
London, ON N5Y 5N6
519-457-1397 or northview@rogers.com

Other available services and equipment:

Reception Facility:

Use of facility for a reception following the ceremony or memorial service, which includes the setup of the facilities, the use of facilities and amenities and the cleanup of the facility.

Catering Services:

Please speak to one of our funeral directors for further details and pricing.

Funeral Stationery Packages:

Package includes Register Book, up to 200 Memorial Records and up to 50 Acknowledgement Cards
Additional Memorial Cards - \$0.25 per card and Acknowledgement Cards - \$30.00 per package.

Staff Musician - Pianist/Organist:

Our staff musician plays a 25-minute prelude before the service, hymns or musical selections during the service and recessional music as people are leaving the chapel. Please refer to our Music Program for further detail and styles of music available.

Peacehold Estate Documentation Services:

Peacehold is local London business, the pioneer in after-care estate documentation. They assist in the accurate and timely processing of necessary forms and documents, maximizing government and corporate benefits after the passing of a loved one.

Live Stream:

Funeral Services in the chapel area may be live streamed via Northview Funeral Chapel's affiliation with Forget Me Not Ceremonies. This is only done with the permission of the family. A link to register for the live stream of the service will be placed on the deceased's tribute page on Northview Funeral Chapel's website.



Northview
Funeral Chapel & Cremation Centre

1490 Highbury Avenue North
London, ON N5Y 5N6
519-457-1397 or northview@rogers.com

Our Top 3 Funeral Packages

1. Traditional Funeral at Northview*

Includes 4 hours of visitation, service on the following day with procession to cemetery.

Professional & Staff Services - Coordinating activities, rites & ceremonies	\$1,595.00
Documentation	\$370.00
Transfer of remains up to 25 kilometers	\$359.00
Basic preparation of remains	\$100.00
Embalming of remains	\$795.00
Facilities - Prepare/Shelter of Remains	\$200.00
Casket Selection	As priced
Staff services for visitation	\$200.00
Facilities for visitation	\$500.00
Staff services for ceremony	\$200.00
Facilities for ceremony	\$495.00
Funeral Coach	\$315.00
Clergy/Lead Car	\$185.00
Service Vehicle	<u>\$150.00</u>
	<u>\$5,464.00</u>

2. Immediate Cremation*

Professional Services	
- Coordinating activities, rites, ceremonies	\$595.00
- Documentation	\$370.00
Transfer up to 25 kilometers	\$359.00
Transfer to crematorium	\$60.00
Cremation Container	As priced
Basic preparation of remains	\$100.00
Cremation at Southwest Crematorium	\$480.00
Facilities - Prepare/Shelter of remains	\$100.00
Service Vehicle	<u>\$150.00</u>
	<u>\$2,214.00</u>



1490 Highbury Avenue North
London, ON N5Y 5N6
519-457-1397 or northview@rogers.com

3. Immediate Cremation with Memorial Service*

Includes one hour of visitation prior to the memorial service

Professional & Staff Services

- Coordinating activities, rites, ceremonies	\$1,395.00
- Documentation	\$370.00
Transfer up to 25 km.	\$359.00
Transfer to crematorium	\$60.00
Cremation at Southwest Crematorium Ltd.	\$480.00
Cremation container	As priced
Basic preparation of remains	\$100.00
Facilities - Prepare/Shelter of Remains	\$100.00
Staff Services for Visitation	\$200.00
Facilities for Visitation – one-hour prior	\$100.00
Staff Services for ceremony	\$150.00
Facilities for ceremony	\$495.00
Service Vehicle	<u>\$150.00</u>

\$3,959.00

At Northview, all our packages are customizable and all taxes will be applied if applicable to the pricing noted above.

Additional Options:

Cemetery Fees	Cost to family
Caskets (refer to Casket section)	As priced
Cemetery Equipment (out of town cemetery)	\$100.00
Cemetery Equipment w/o Vault (out of town cemetery)	\$450.00
City of London Death Registration	\$40.00
Clergy Honorarium	\$275-325
Coroner's Certificate	\$75.00
Cremated Remains Refundable Deposit	\$350.00
Cremation - Services provided by Southwest Crematorium Ltd. **	\$480.00
Embalming - Autopsied Case	\$895.00
Funeral Coach: Mileage charge will apply for transfers over 25 kms at a rate per km	\$2.00
Funeral Flowers	Per florist



Northview
Funeral Chapel & Cremation Centre

1490 Highbury Avenue North
London, ON N5Y 5N6
519-457-1397 or northview@rogers.com

Funeral Stationery - Basic Register Book	\$95.00
Funeral Stationery - Artisan Register Book	\$250.00
Funeral Stationery - Memorial Records	\$175.00
Funeral Stationery - Acknowledgement/Thank You Cards	\$100.00
Funeral Stationery - Artisan Stationery Package	\$449.00
Funeral Stationery - Basic Funeral Stationery Package	\$325.00
Graveside Staff Required – Immediate Disposition	\$150.00
Hairdresser (basic style – cut or rinse extra)	\$75.00
Holding Fee (per day after 5 days)	\$40.00
Live Streaming of Chapel Service	\$100.00
Newspaper Notices	At cost
Out-of-town Death Registration	\$35.00
Peacehold Estate Documentation Services	\$595.00
Reception Facility	\$395.00
Removal of an implant heart pacemaker	\$75.00
Service Vehicle: Mileage charge will apply for transfers over 25 kms at a rate per km	\$1.95
Staff Musician	\$200.00
Visitation Additional 2 hours (\$100.00 Staff & \$100.00 Facilities)	\$200.00

*Our pricing lists remain competitive with industry standards and are subject to change. All applicable taxes will be added to the above prices where applicable.

Caskets

As a proud independent Canadian business, we are just as proud to support our fellow Canadians by purchasing over 90% of our products from Canadian manufacturers, including several handcrafted urns made by local artisans.

Cremation containers are available in a variety of materials, such as wood or reinforced cardboard. Cremation containers meet legal requirements and consider both economic and environmental aspects.

We are proud to offer the following selection from Victoriaville & Co., a Canadian owned company from Victoriaville, Quebec.



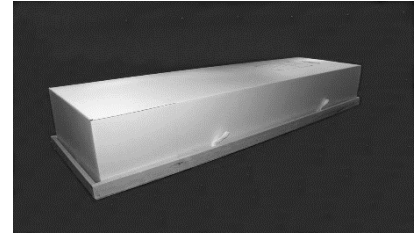
Northview
Funeral Chapel & Cremation Centre

1490 Highbury Avenue North
London, ON N5Y 5N6
519-457-1397 or northview@rogers.com

Suitable for Cremation or Burial:

Flute Board Container-- \$249.00

An adult standard, reinforced cardboard container with a wooden base.



Glencove – CR879-00033- \$475.00

Adult standard, solid wood container, natural finish, beige crepe interior with pillow and rope bar carriers.



Glenbar CR580-00012 - \$695.00

Adult standard, solid wood container, natural finish, white crepe interior with pillow and wooden bar carriers.



Crosby DR220-00006 - \$1,295.00

Fiberboard construction, blue cloth covered, white silk interior, adjustable frame bed with fixed metal handles.



Oxford PC DR220-00042 - \$1,895.00

Particleboard construction, grey felt covered, white satin interior, excelsior bedding with swing bar metal handles.



1490 Highbury Avenue North
London, ON N5Y 5N6
519-457-1397 or northview@rogers.com

Puma PC WR252-00180 - \$1,995.00

Value Choice Selection

5/8" poplar construction, satin finish, beige crepe interior, adjustable bed and swing bar wooden handles.



Halton WR252-00558 - \$2,295.00

Solid poplar and veneer components, satin finish, eggshell silk interior, fixed wood bar handles and simplistic wood corners.



Borealis PC WR232-00359 - \$2,495.00

Ash construction, topaz colour treatment, beige crepe interior, adjustable bed, swing bar wood handles.



Nell Pine WR255-00551 - \$2,595.00

Solid pine construction, satin finish, beige crepe interior, adjustable frame bed, antique gold tone swing bar handles.



Melrose WR252-1308 - \$2,495.00

Solid poplar with veneer components, light Titian colour treatment, satin finish, white crepe interior, bronze tone swing bar handles with simplistic wood corners.



1490 Highbury Avenue North
London, ON N5Y 5N6
519-457-1397 or northview@rogers.com

Milword PC WR252-00262 - \$2,695.00

Solid poplar and veneer components, walnut colour treatment, satin finish, tan crepe interior, adjustable bed frame, swing bar wood handles.



Heavenly White WR252-00269 - \$2,995.00

Solid poplar with veneer components, white colour treatment in a hand-rubbed high gloss finish, white crepe interior, mist copper tone swing bar handles.



Carnaby WR250-0002 - \$2,995.00

Solid poplar construction, Vantablack colour treatment, satin finish, beige basket weave interior with satin black swing bar hardware.



Homeward WC252-0009 - \$3,095.00

Solid poplar and veneer components, hand-rubbed high gloss finish, tan crepe interior, removable mini insert cap panels, antique gold tones swing bar handles with record holder.



Bristol PC WR250-00418 - \$2,995.00

Quality solid poplar construction, hand rubbed high gloss finish, crepe tan interior, wood bar carriers, carved column corners and record holder.



1490 Highbury Avenue North
London, ON N5Y 5N6
519-457-1397 or northview@rogers.com

Elizabeth PC Octagon WR230-00014 - \$3,095.00

Ash and veneer components, shaded saffron colour treatment, satin finish, blush pink crepe interior, embroidered single rose in back panel, wood bar handles with record holder.



Dominion PC WR220-00379 - \$3,195.00

Quality solid silver maple construction, rich titan colour treatment, adjustable bedframe, hand rubbed high gloss finish, tan crepe interior and silver swing bar handles.



Fairholme Octagon WR210-00195 - \$3,295.00

Value Choice Selection

Solid Appalachian red oak construction, gloss finish, blush pink crepe interior, embroidered single rose in back panel, adjustable bed frame, shaded saffron colour treatment, metal lug and swing wood handles.



Dunfield WR210-00317 - \$3,495.00

Quality solid Appalachian red oak construction, shaded Persian fawn colour treatment, hand rubbed gloss finish, blush pink crepe interior, swing bar handles.



Victoria Octagon WR205-00191 - \$3,595.00

Quality solid cherrywood construction, empire colour treatment, hand rubbed high gloss finish, pink velvet interior, antique gold tone swing bar handles.



Northview
Funeral Chapel & Cremation Centre

1490 Highbury Avenue North
London, ON N5Y 5N6
519-457-1397 or northview@rogers.com

Woodstock WC210-0036 - \$3,695.00

Value Choice Selection

Quality solid Appalachian red oak construction, topaz colour treatment, satin finish, beige velvet interior with crepe footbed, antique gold tone swing bar handles.



Michael Angelo WC220-00001 - \$3,995.00

Value Choice Selection

Quality solid silver maple construction, traditional Titian colour treatment, hand-rubbed high gloss finish, beige velvet interior, antique gold tone Last Supper swing bar handles.



St. Patrick WC201-00016 - \$4,295.00

Solid ribbon grained mahogany construction, traditional Titan colour treatment, hand-rubbed high gloss finish, beige velvet interior, removable mini insert cap panel, antique gold tone swing handles.



Capital WR201-20799 - \$6,395.00

Solid ribbon grained mahogany construction, traditional Titian colour treatment, prestige hand-rubbed high gloss finish, beige velvet interior, brushed cooper/bronze swing bar handles.



In addition to the caskets above, we also carry rental and metal caskets. Metal caskets are not suitable for cremation however, our funeral directors will be pleased to provide you with pricing and options. A rental casket has a removable lining and interior structure and **only the shell is used repeatedly.**

Dominion Rental - \$2,295.00



1490 Highbury Avenue North
London, ON N5Y 5N6
519-457-1397 or northview@rogers.com

Burial Vaults

A burial vault is a lined and sealed outer receptacle that houses the casket. It protects the casket from the weight of the earth and heavy maintenance equipment that will pass over the grave. It also helps resist water and preserves the beauty of the cemetery or memorial park by preventing the ground from settling.

We provide 4 options by Haberer Interment Services, a local company in Zurich, Ontario.

- ❖ **Topseal 1** ~ adult standard unlined concrete burial vault ~ \$995.00
- ❖ **Estate** ~ adult standard single reinforced burial vault, concrete construction with polystyrene inner liner. ~ \$1,295.00
- ❖ **Trilogy** ~ Adult standard, personalization included, concrete construction with white marble liner ~ \$1,895.00
- ❖ **Reflection** ~ Adult standard, concrete construction lined with polystyrene liner with an additional layer of stainless-steel plating ~ \$3,000.00

Urns and Cremation Containers

Urns are found in marble, wood, metal, ceramic and some composite materials. Select urns may be engraved or personalized with script or images. Keepsake cremation urns for cremated remains are small sized cremation urns or cremation jewelry. These urns or jewelry can hold a small amount of cremated remains and are often used in addition to a full-sized urn when ashes are to be shared amongst family and friends.

We are proud to offer the following selection from Victoriaville & Co., a Canadian owned company from Victoriaville, Quebec, unless otherwise noted. These are just a few that we carry on hand. Please inquire with our funeral directors for more options and personalization.

We have placed our urns into categories to help simplify your selection process.

Selection Series – \$349.00

- ❖ **Nicodeme** ~ US810-00482, Plastic, 4 colours available
(6.875" W X 5.5" D X 9.5" H) Vol 230 ci
- ❖ **Avalon** ~ US199-20011, Bamboo, Natural Satin, custom engraving available
(8.9" W X 6.44" D X 5" H) Vol 200 ci
- ❖ **Select Standard** ~ US435-00451, Permalock Brass Sheet, custom engraving available



Northview
Funeral Chapel & Cremation Centre

1490 Highbury Avenue North
London, ON N5Y 5N6
519-457-1397 or northview@rogers.com

(3.5" W X 5.875" D X 8.875" H) Vol 180 ci

- ❖ **Stewart Solid Oak** by Stewart Cremation Urns ~ Urn #1, locally hand-made wooden urn
(10.5" W X 6.5" D X 5.75" H)
- ❖ **Spring Rain** ~ US550-00004, Kiln Fired Ceramic, blue and teal colours
(7.68" W X 9.25" H) Vol. 195 ci/pc

Classic Series - \$395.00

- ❖ **Milano** ~ US210-00012, Metal, custom engraving available, floral etching in metal or pink body
(7" diameter X 11.2" H) Vol 210 ci
- ❖ **Memoriam** ~ US440-00448, Metal, custom engraving available, bronze, nickel or copper colours
(4.75" W X 8.5" D X 8.25" H) Vol 200 ci
- ❖ **Java Black** ~ US310-00002, Marble, custom engraving available
(8" W X 11" H) Vol 200 ci
- ❖ **Allen** ~ US120-00003, Solid Maple, light Titian satin finish, custom engraving available
(11.5" W X 7.2" D X 6.25" H) Vol 200 ci
- ❖ **Clifford Pottery Urns**, uniquely handcrafted in London, kiln fired twice, individually stamped with artist initials
(8.5" diameter X 9" H) Vol 240 ci

Signature Series - \$695.00

- ❖ **Teardrop** ~ US840-30141, Metal, silver, bronze or gold tones available
(7" W x 7"D x 12.25" H), Vol. 200 ci/ pc
- ❖ **Cloisonne** ~ US450-00003, Opal, Autumn leaves, Blue Butterfly, Butterfly Garden or Blue Sapphire options
(7" dia X 11" H) Vol 200 ci
- ❖ **Luxor** ~ US101-00237, Solid wood mahogany, Titan gloss finish
(12"W x 7" D X 7.25" H), Vol. 210 ci /pc



Northview
Funeral Chapel & Cremation Centre

1490 Highbury Avenue North
London, ON N5Y 5N6
519-457-1397 or northview@rogers.com

Prestige Series - \$795.00

- ❖ Highland ~ US120-00009, Mantle Clock, Solid Maple, Cherry Stain
(10.25" W X 7.5" D X 14" H) Vol 200 ci
- ❖ Alicante ~ US520-00001, Alabaster in blue marble hue
(7.25" dia X 9.625" H) Vol 195 ci
- ❖ Azur ~ US610-00474, White Limoges Porcelain with gold trim
(7" dia X 10.375" H) Vol 205 ci
- ❖ Honour II ~ US105-00005, Cherry wood, Rosewood Gloss, custom engraving or picture frame insert
(10.25" W X 6.75" D X 11" H) Vol 200 ci

Distinction Series – Price upon request

- ❖ Eclisse Galet – US899-00011, Burl wood with aluminum or bronze insert
(4 3/8" W x 7 5/8" D x 9 7/8" H) Vol 200 ci

Companion Urns – Dual capacity

- ❖ **Stewart Solid Oak** by Stewart Cremation Urns ~ Urn #2,
locally hand-made wooden urn \$449.00
(10.5" W X 6.5" D X 9.75" H)
- ❖ **Ivory Cultured Marble** by Fabhaven, FH2PC110, 2-Piece Heart \$895.00
(9.25" W x 9.25" D x 9.25" H)
- ❖ **Select Companion** by Victoriaville, UD210-00002, Sheet Bronze \$795.00
(7.75" W x 7.75" D x 7.25" H)

Other Urns and Jewellery

There are many different options for retaining the cremated remains other than a typical urn and some are specifically designed to simplify the scattering of cremated remains in a respectful way. Scattering tubes or biodegradable urns are popular choices for releasing your loved one into their desired resting



Northview
Funeral Chapel & Cremation Centre

1490 Highbury Avenue North
London, ON N5Y 5N6
519-457-1397 or northview@rogers.com

place. Make sure to check with your local authority on rules and regulations for scattering of ashes.

At Northview, we can provide you with many options for cremation jewellery that hold a tiny portion of your loved one's cremated remains. Please inquire with our funeral director for more information.

Scattering Tubes:

Tall ~ \$139.00

Mini ~ \$65.00

Carboard tube with removable lid for scattering of ashes.

10 different photos available.



Keepsake Urns:

When ashes are to be shared and separated for family members in different locations, Keepsake urns hold a token portion of cremated remains. These tiny urns are versions of the larger urn. Keepsakes come in a variety of shapes but mostly are small cylinder urns or heart shaped.

Prices are based on the series as noted above:

Selection Series - \$75.00

Classic Series - \$105.00

Signature Series - \$169.00

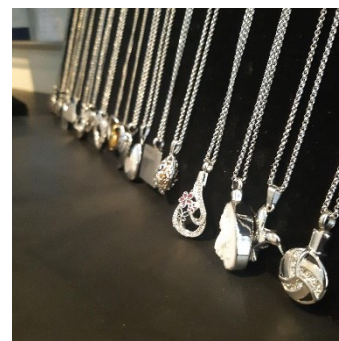
Prestige Series - \$185.00



Support Stands are an extra charge - \$12.00

Cremation Jewellery:

Through our cremation jewellery retailers, we are able to provide you with a multitude of options for keeping your loved one close to your heart. Personalized engraving and fingerprint options are just a few ways to customize each piece. Catalogues provided upon request.



1490 Highbury Avenue North
London, ON N5Y 5N6
519-457-1397 or northview@rogers.com

Miscellaneous Items:

❖ Velvet Urn Bag –Midnight Blue	\$ 20.00
❖ Guaranteed Travel Assurance Plan*	\$495.00
❖ Reception Caterer*	

* Further details may be obtained through our Funeral Directors.

Disbursements and Financial Information

Disbursements

When requested by the purchaser disbursements are items arranged for, and paid to, third-party suppliers on your behalf. In certain circumstances, you may be asked to pay for these items at the time the contract is entered into. The following are some items that are often identified as disbursements:

- ❖ Coroner's fee: This is a fee charged by the coroner for issuing a certificate that allows cremation to take place. The fee is set by the Chief Coroner for Ontario.
- ❖ Clergy Honorarium: This is an amount paid to the clergy for their services. In some cases, the amount is set by the clergy; in others it is an amount determined by you.
- ❖ Newspaper or radio notices: These are charges for death notices placed in newspapers or radio or other media outlets.
- ❖ Municipal death registration fee: This is a fee charged by the local municipality to register the death. The fee is set by the municipality and may vary.

Payment, Financing and Funding:

Payment:

Unless otherwise specified, payment is due within 45 days of signing the contract. Interest may be added after 45 days.

For your convenience, payment may be made by cash, cheque, bank draft, debit or credit (only Visa and Mastercard accepted), and E-Transfer to northview@rogers.com.



1490 Highbury Avenue North
London, ON N5Y 5N6
519-457-1397 or northview@rogers.com

Pre-Paid Arrangements:

For your convenience, we offer two funding options for pre-payment of your services and supplies.

When prepaying, you pay for the services and supplies today, and the funds along with the accrued interest, will be used to pay for the services and supplies when they are delivered at the time of death.

Trust:

You pay the money directly to us and we will place it in trust, where it will accrue interest until the contract is fulfilled (when services and supplies are delivered) or the contract is cancelled.

Insurance:

You may purchase an insurance contract where proceeds of the insurance contract will be used to pay for the services and supplies at the time they are delivered or the contract is cancelled.

Please ask for one of our Pre-Planning Kits for more information on how pre-planning makes sense for you and your family.

*Our Accessible Customer Service Standard Policy is available upon request.



1490 Highbury Avenue North
London, ON N5Y 5N6
519-457-1397 or northview@rogers.com